

SHINE

(Seniors Housing Information and Navigation Ease)

Presented by:

Zabeena Rahiman, SHINE Manager

Seniors Services Society of BC

and

Carol Dickson

Manager, Senior Community Support Services

Richmond Cares, Richmond Gives

Building Hope – Seniors’ Housing Public Forum

Richmond Poverty Reduction Coalition

November 26, 2025



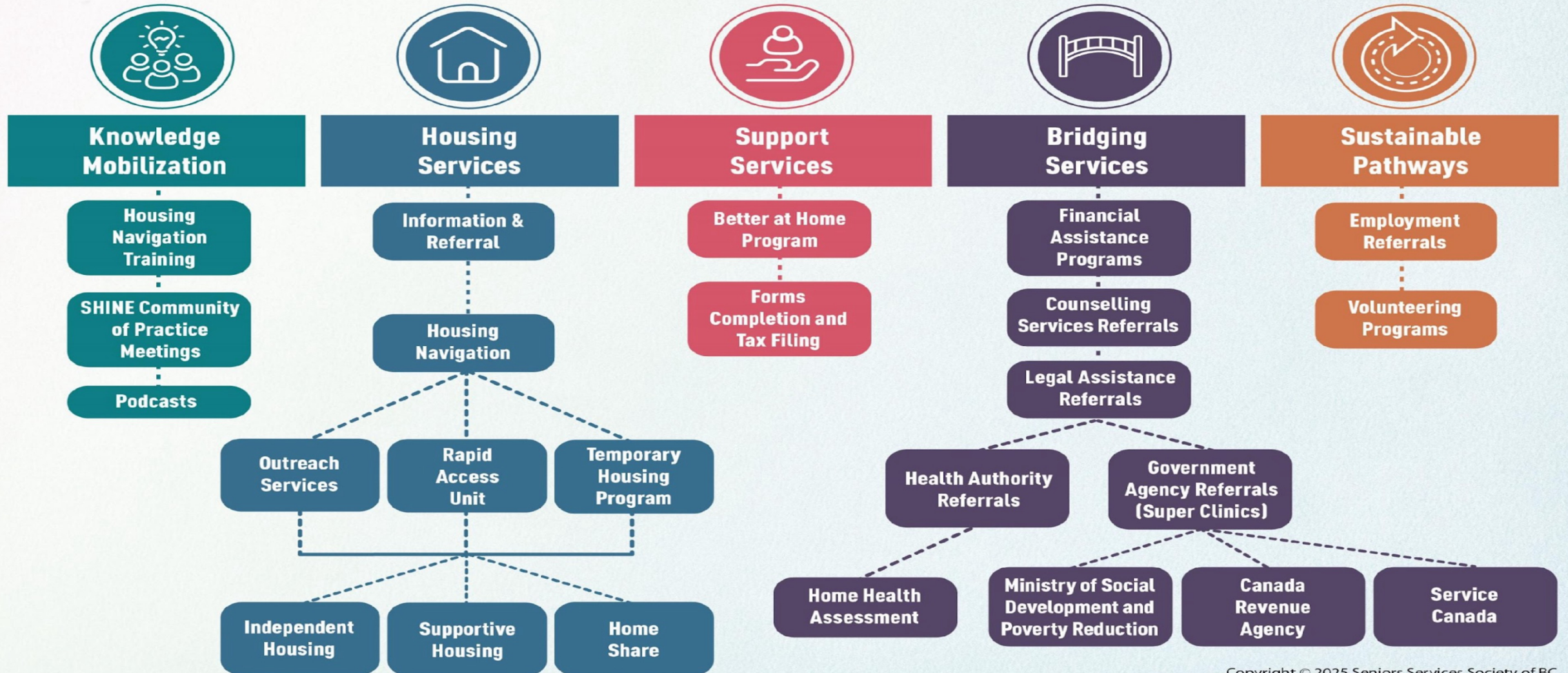
Agenda:

- What is SHINE and why is it needed ?
- The SHINE Model and what makes SHINE unique?
- SHINE Provincial Partner Map
- Housing Challenges for Seniors in Richmond
- Unique Difficulties placing Long-term Homeless Seniors
- Conclusion and Contact Information

Seniors Housing Information Navigation Ease

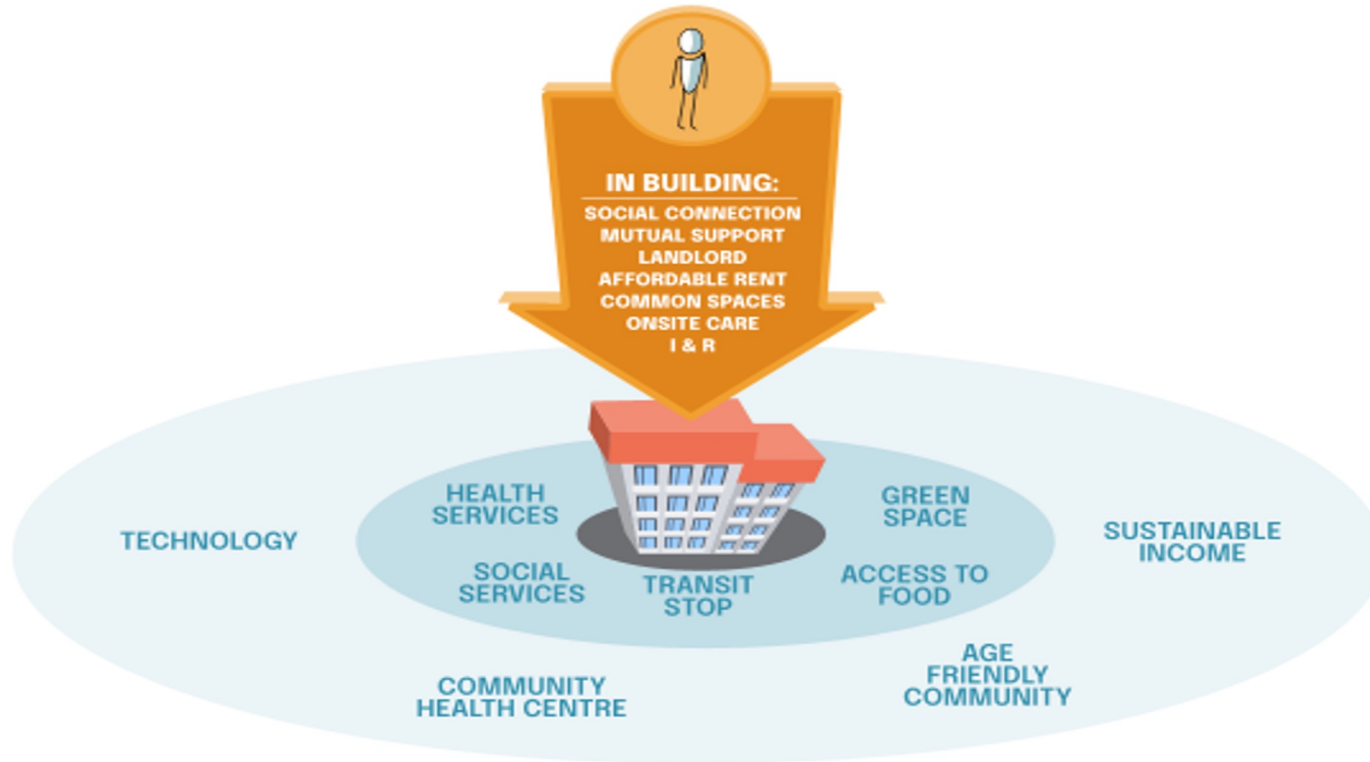


The Seniors Housing Information and Navigation Ease program (SHINE) is a network based model that assists seniors and their caregivers to easy access senior-specific programs, supports and services across British Columbia (BC) related to housing, housing security, isolation and mental wellness.



The SHINE Model

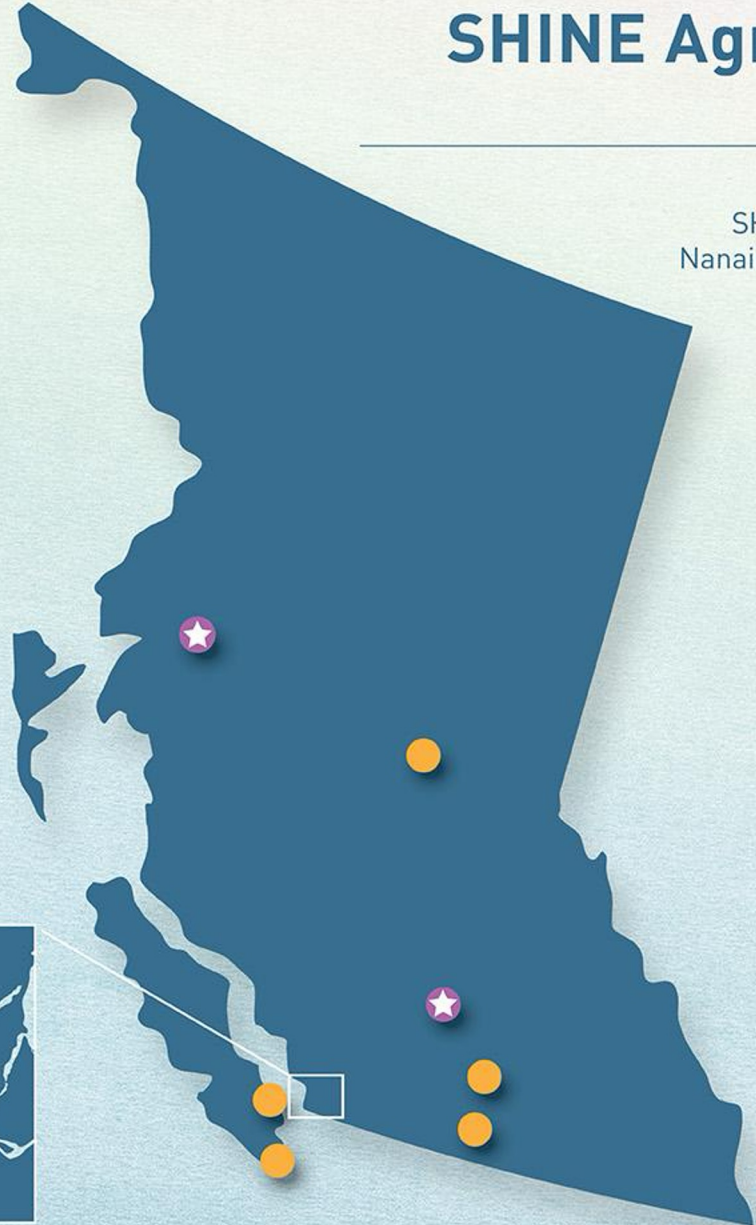
Senior renters aging in the right place



SHINE Agreements with Partner Agencies

2025

SHINE: 12 Partners as of 2025 in New Westminster, Vancouver, Richmond, Sidney, Nanaimo, Penticton, Prince George, Kelowna, Langley, Surrey, Terrace and Kamloops.




Partners


★ = a new partner for 2025

- Seniors Services Society of BC (New Westminster)
- Beacon Community Association (Sidney)
- OneSky Community Resources (Penticton)
- Richmond Cares, Richmond Gives (Richmond)
- Prince George Council of Seniors (Prince George)
- Nanaimo Family Life Association (Nanaimo)
- West End Seniors Network Society (Vancouver West End)
- Seniors Outreach and Resource Centre (Kelowna)
- Langley Senior Resources Society (Langley/Aldergrove)
- Brella Community Services Society (Surrey)
- ★ Terrace & District Community Services Society (Terrace)
- ★ Interior Community Services (Kamloops)


Housing Challenges for Seniors in Richmond

Key Issues:

 **Extreme wait times for subsidized housing**
→ Pushes seniors into the fast-moving private market

 **Private rentals are not senior-friendly**
→ Affordable units go quickly
→ Most lack accessibility features






 **Service gap for “at-risk” seniors**
→ Support often begins only after homelessness occurs

 **Limited external resources**
→ Agencies have funding and mandate restrictions

Housing Challenges for Seniors in Richmond

Key Issues Continued:

Long-Term Homeless Seniors Face Added Barriers:

-  **Mobility & transportation limitations**
-  **Language barriers**
-  **Anxiety, depression, and low follow-through**
-  **Lack of social support**
-  **Insufficient funding to secure appropriate housing**

Unique Difficulties Placing Long-Term Homeless Seniors

Key Issues:

Access Barriers

Difficulty securing viewings

Mobility issues, transportation challenges, or inability to afford travel

Challenges communicating with landlords & managing applications

Language Barriers

Prevent seniors from navigating resources or applying independently

Unique Difficulties Placing Long-Term Homeless Seniors

Key Issues Continued:

Mental Health Barriers

Anxiety & depression reduce trust, participation, and follow-through
Seniors may resist help due to fear, overwhelm, or past negative experiences

Social Isolation

Lack of social support limits their ability to attend appointments, viewings, or complete applications

Funding Limitations

Available supports often **do not cover suitable or accessible units**
Funding does not guarantee a place that meets mobility or safety needs

Conclusion and Contact Information

Key Takeaways:

- 🏠 Housing stability is critical for healthy aging
- 🤝 Collaboration is essential: Policy, research, and community engagement

Contact:

- ✉️ alison@sssbc.ca
- ✉️ zabeena@sssbc.ca

